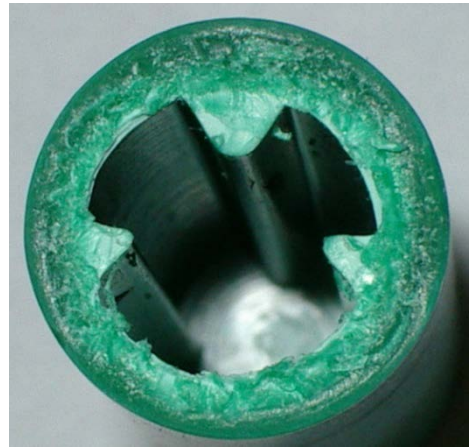




E-M15-CH SERIES



E1-M15-CH

| | | |
|------------------------------|---|-----------|
| Contact type | | NO |
| Switching capacity | W | 60 |
| Switching current | A | 3 |
| Switching voltage | V AC/DC | 400 |
| Breakdown voltage | VDC | 1000 |
| Contact resistance | Ω | 0.080 |
| Insulation resistance | Ω | 10^{11} |
| Capacitance | pF | 0.8 |
| Operating frequency | Hz | 200 |
| Operating temperature | $^{\circ}\text{C}$ | -40 +150 |
| Weight | Kg | 0.135 |
| Protection | | IP-55 |
| Construction material | High impact polystyrene and nickel-plated brass | |
| Detection | High accuracy. High reliability. 100% repeatability | |
| Reed switch | Compact 3817, GÜNTHER | |

