



**THE UK'S LARGEST
INDEPENDENT LIFT CONTROL
PANEL MANUFACTURER**

5 YEAR GUARANTEE

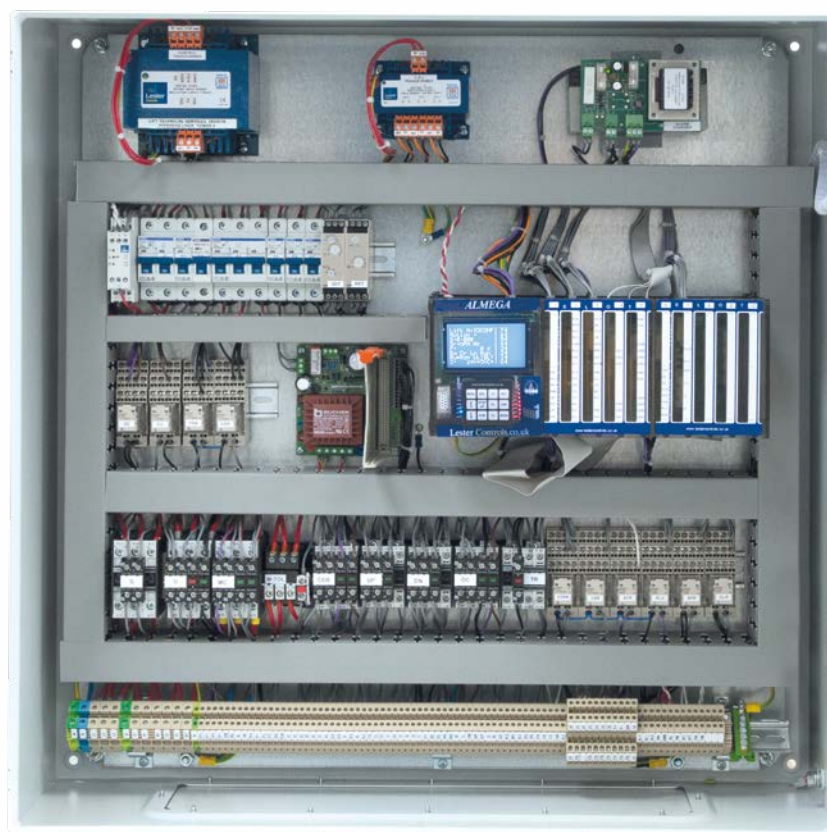
FEATURES

- Designed using surface mount technology
- Enclosed in custom designed, DIN rail mounting modules
- Comfortably fits in shallow MRL cabinets
- Dual Core 100 / 50 MHz Processor with XGATE
- Graphical TFT LCD with touch screen
- Simple, user-friendly Menu system
- USB Memory Stick Interface for software upgrades and parameter backup (Almega II only)
- Uncontrolled Movement Detection (A3)
- Only 3 shaft limits when using Dual Position System
- Adjustment of slowing distances / floor levels via software
- Internet, Intranet and LAN Connectivity using Ethernet and Wi-Fi (optional at extra cost)
- Dispatcherless Group Systems
- Direct serial connection to selected Position Devices
- Direct serial connection to Lester Controls' Serial Indicators/Speech Unit
- Direct serial connection to Lester Controls' Serial IO (Car & Landing pushes)
- Fault logging of the last 250 events, with description & event code
- Unique Password set per system (for parameter protection)
- Plug and Play board identification (to assist with system configuration)
- LED indication for Input / Output, CPU status, Communications, PSU & associated fuses
- Fully regulated 24v and 5v Power Supplies
- Separate CAN Communications for Car, Landing, Per Lift, Drive and IO
- Windows application software for diagnostics and programming

All information is for guidance only, E & OE
©Copyright 2020, Lester Controls Systems Ltd,
All rights reserved

HYDRAULIC ELEVATOR

A wide range of hydraulic controllers using the Almega I or II have been developed, incorporating the latest technology and processors. Controllers are EN81-70 and/or EN81-20 compliant (where required). A3 compliance is certified for the Blain L10, Bucher DSV-A3 and GMV NGV valve. Features of either processor are listed.



Head Office

Unit D 18 Imperial Way
Croydon Surrey CR0 4RR
T: 020 8288 0668 | F: 020 8288 0667

Midlands Office

Units 1-4 Wycliffe Industrial Park
Leicester Road Lutterworth Leicestershire
LE17 4HG
T: 01455 204983 | F: 01455 557780

Glasgow Office

4 Lonmay Place, Panorama Business
Park, Glasgow G33 4ER
T: 0141 771 6171